

Date : 2023-08-08

CERTIFICATE OF ANALYSIS - GC PROFILING

SAMPLE IDENTIFICATION

Internal code : 23G20-NPA07

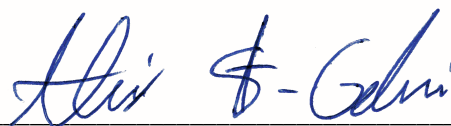
Customer Identification : Tangerine - Citrus reticulata - Italy - NPS00090 - Lot # NP0195

Type : Essential Oil

Source : Citrus reticulata cv. Tangerine

Customer : Nature Packaged

Checked and approved by:



Alexis St-Gelais, Ph. D., Chimiste 2013-174

Notes: This report is digitally signed, it is only considered valid if the digital signature is intact. The results only describe the samples that were submitted to the assays.

This report is an update from the first version issued on 2023-08-03 to format it for online publication.

GAS CHROMATOGRAPHIC ANALYSIS

Method : PC-MAT-014 - Analysis of the composition of an essential oil or other volatile liquide by FAST GC-FID

***ISO**

Results : See analysis summary (next page)

Analyst : Amélie Simard, Analyste

Date : 2023-08-01

PHYSICOCHEMICAL DATA

Refractive index : 1.4735 ± 0.0003 (20 °C)

Method : PC-MAT-016 - Measure of the refractive index of a liquid.

Analyst : Cindy Caron B. Sc.

Date : 2023-07-20

CONCLUSION

No adulterant, contaminant or diluent has been detected using this method.

ANALYSIS SUMMARY - CONSOLIDATED CONTENTS

New readers of similar reports are encouraged to read table footnotes at least once.

Identification	%	Class
α -Thujene	0.03	Monoterpene
α -Pinene	0.56	Monoterpene
Camphene	0.01	Monoterpene
Sabinene	0.47	Monoterpene
β -Pinene	0.12	Monoterpene
Myrcene	1.78	Monoterpene
Pseudolimonene	0.01	Monoterpene
α -Phellandrene	0.04	Monoterpene
Octanal	0.15	Aliphatic aldehyde
Δ^3 -Carene	0.13	Monoterpene
α -Terpinene	0.02	Monoterpene
<i>meta</i> -Cymene	0.01	Monoterpene
<i>para</i> -Cymene	0.05	Monoterpene
Limonene	93.51	Monoterpene
β -Phellandrene	0.26	Monoterpene
(<i>Z</i>)- β -Ocimene	0.02	Monoterpene
(<i>E</i>)- β -Ocimene	0.10	Monoterpene
γ -Terpinene	0.35	Monoterpene
<i>cis</i> -Sabinene hydrate	0.02	Monoterpenic alcohol
Octanol	0.02	Aliphatic alcohol
Terpinolene	0.04	Monoterpene
Linalool	0.25	Monoterpenic alcohol
Nonanal	0.03	Aliphatic aldehyde
<i>trans-para</i> -Mentha-2,8-dien-1-ol	0.02	Monoterpenic alcohol
<i>cis</i> -Limonene oxide	0.02	Monoterpenic ether
<i>trans</i> -Limonene oxide	0.03	Monoterpenic ether
Citronellal	0.03	Monoterpenic aldehyde
Terpinen-4-ol	0.01	Monoterpenic alcohol
α -Terpineol	0.03	Monoterpenic alcohol
Unknown	0.01	Unknown
Decanal	0.14	Aliphatic aldehyde
<i>trans</i> -Carveol	0.02	Monoterpenic alcohol
Nerol	0.01	Monoterpenic alcohol
<i>cis</i> -Carveol	0.01	Monoterpenic alcohol
Neral	0.05	Monoterpenic aldehyde
Geraniol	0.01	Monoterpenic alcohol
Geranial	0.05	Monoterpenic aldehyde
Limonen-10-ol	0.01	Monoterpenic alcohol
Undecanal	0.01	Aliphatic aldehyde
(<i>2E,4E</i>)-Decadienal	0.01	Aliphatic aldehyde

<i>para</i> -Mentha-1,8-diene-4-hydroperoxide	0.01	Monoterpenic peroxide
Limonene <i>trans</i> -glycol	0.01	Monoterpenic alcohol
Unknown	tr	Sesquiterpene
Neryl acetate	0.01	Monoterpenic ester
α -Copaene	0.03	Sesquiterpene
Geranyl acetate	0.02	Monoterpenic ester
β -Elemene	0.01	Sesquiterpene
Dodecanal	0.04	Aliphatic aldehyde
β -Caryophyllene	0.02	Sesquiterpene
β -Copaene	0.02	Sesquiterpene
α -Humulene	0.01	Sesquiterpene
(<i>E</i>)- β -Farnesene	0.02	Sesquiterpene
Germacrene D	0.03	Sesquiterpene
Valencene	0.03	Sesquiterpene
α -Muurolene	0.01	Sesquiterpene
γ -Cadinene	0.01	Sesquiterpene
(3 <i>E</i> ,6 <i>E</i>)- α -Farnesene	0.04	Sesquiterpene
δ -Cadinene	0.03	Sesquiterpene
α -Elemol	0.01	Sesquiterpenic alcohol
β -Sinensal	0.03	Sesquiterpenic aldehyde
α -Sinensal	0.06	Sesquiterpenic aldehyde
Palmitic acid	0.08	Aliphatic acid
Linoleic acid	0.05	Aliphatic acid
Oleic acid	0.04	Aliphatic acid
Stearic acid	0.22	Aliphatic acid
Tangeretin	0.04	Flavonoid
3,3',4',5,6,7,8-Heptamethoxyflavone	0.02	Flavonoid
Nobiletin	0.01	Flavonoid
Consolidated total	99.35	

tr: The compound has been detected below 0.005% of the total signal

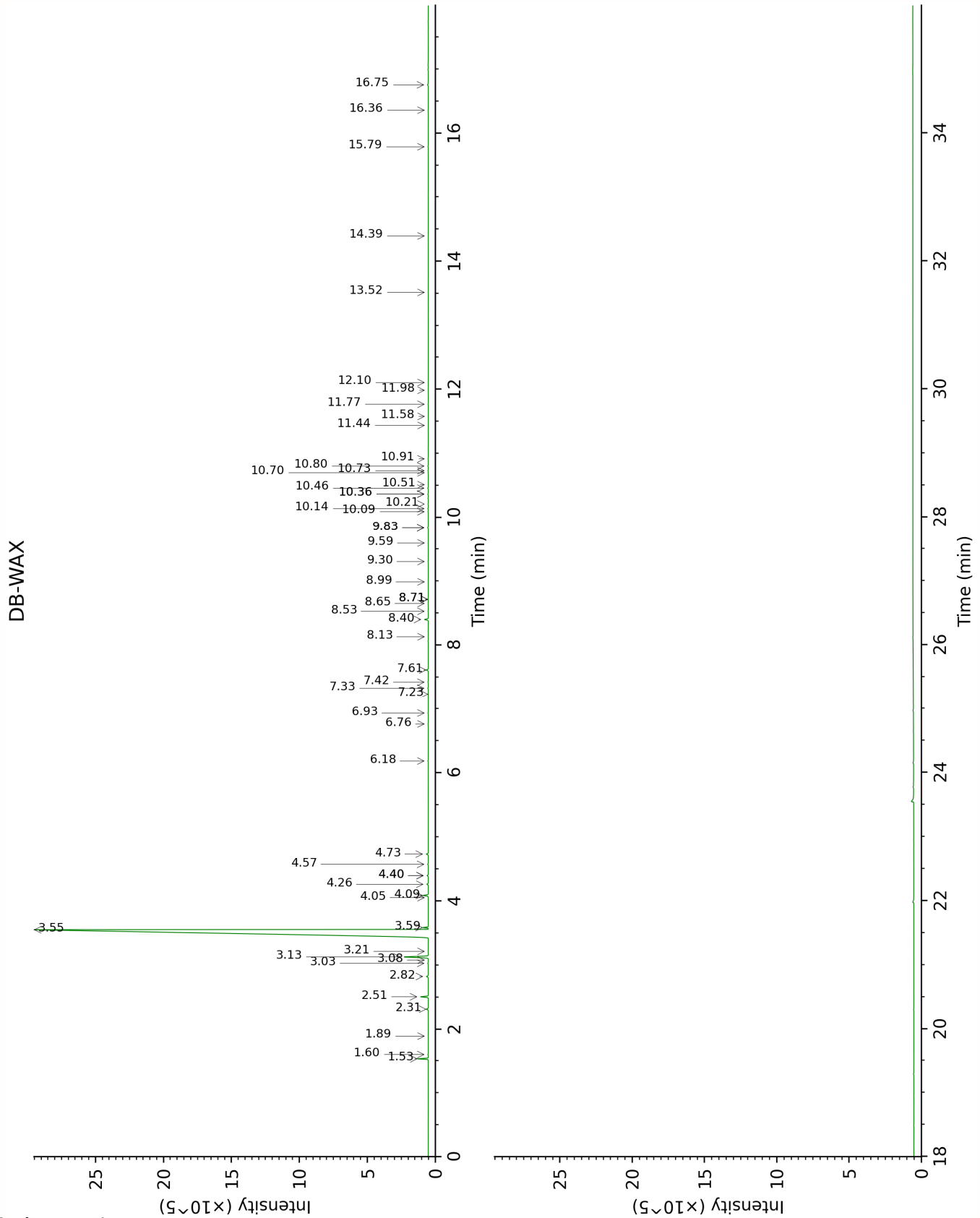
Note: no correction factor was applied

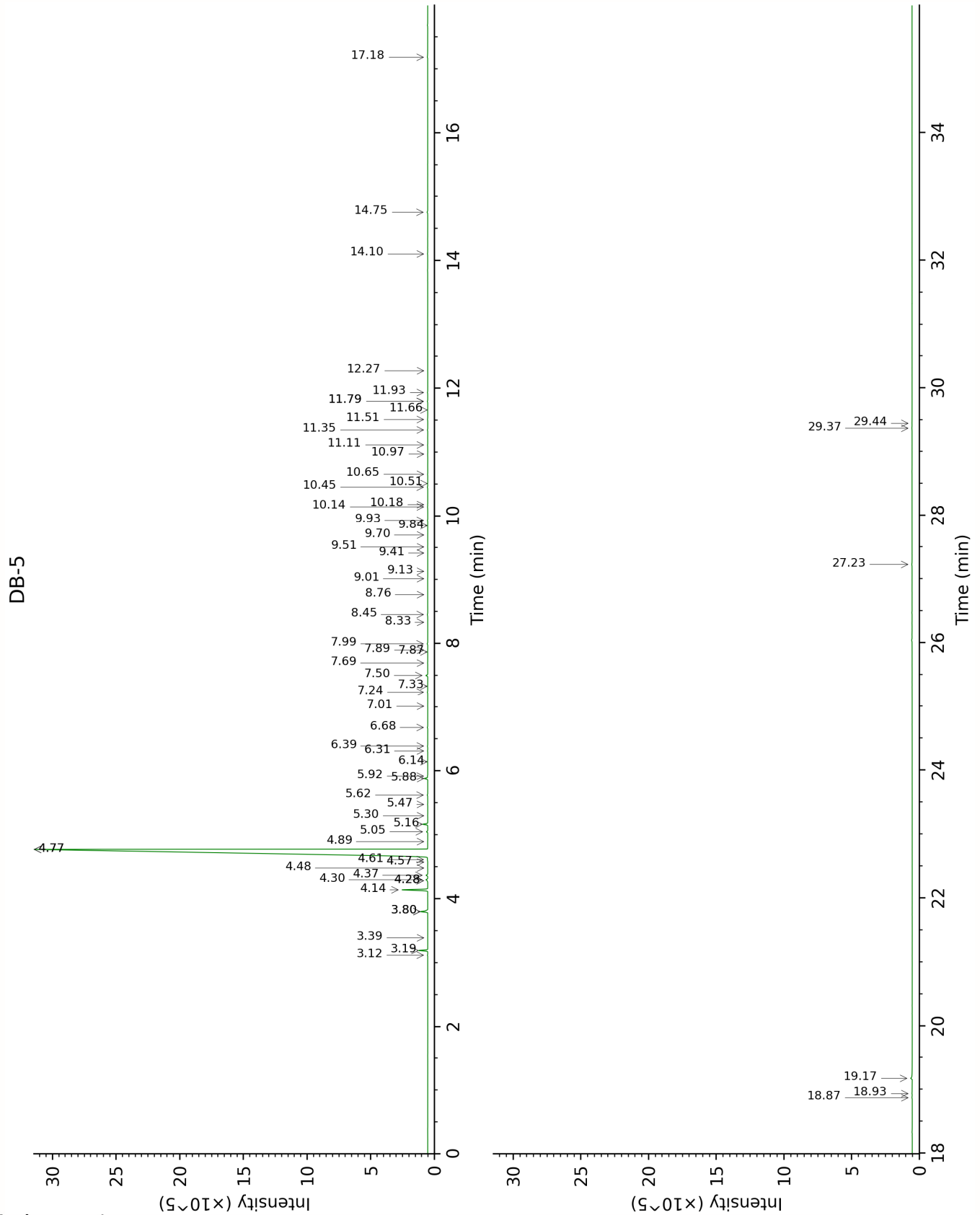
About "consolidated" data: The table above presents the breakdown of the sample volatile constituents after applying an algorithm to collapse data acquired from the multi-columns system of PhytoChemia into a single set of consolidated contents. In case of discrepancies between columns, the algorithm is set to prioritize data from the most standard DB-5 column, and smallest values so as to avoid overestimating individual content. This process is semi-automatic. Advanced users are invited to consult the "Full analysis data" table after the chromatograms in this report to access the full untreated data and perform their own calculations if needed.

Unknowns: Unknown compounds' mass spectral data is presented in the "Full analysis data" table. The occurrence of unknown compounds is to be expected in many samples, and does not denote particular problems unless noted otherwise in the conclusion.

Bracketed value (xx): A bracketed percent value indicate that two or more compound percentage could not be solved due to coelution.

This page was intentionally left blank. The following pages present the complete data of the analysis.





FULL ANALYSIS DATA

α-Thujene	Column DB-WAX			Column DB-5		
	1.60	996.8	0.02	3.12	926.3	0.03
α -Pinene	1.53	990.1	0.54	3.19	931.1	0.56
Camphene	1.89	1025.2	0.01	3.39	944.1	0.01
Sabinene	2.51	1083.7	0.47	3.80*	971.0	[0.59]
β -Pinene	2.31	1065.1	0.12	3.80*	971.0	[0.59]
Myrcene	3.13	1133.0	1.79	4.14	993.4	1.78
Pseudolimonene	3.08	1129.3	0.01	4.28*	1002.7	[0.03]
α -Phellandrene	3.03	1125.3	0.04	4.28*	1002.7	[0.03]
Octanal	4.73	1253.4	0.13	4.30	1003.7	0.15
Δ^3 -Carene	2.82	1109.5	0.13	4.37	1008.1	0.13
α -Terpinene	3.22	1139.7	0.02	4.48	1015.2	0.02
<i>meta</i> -Cymene	4.40*	1228.9	[0.08]	4.57	1020.9	0.01
<i>para</i> -Cymene	4.40*	1228.9	[0.08]	4.61	1023.4	0.05
Limonene	3.55	1165.8	93.51	4.77*	1033.3	[93.88]
β -Phellandrene	3.59	1168.4	0.26	4.77*	1033.3	[93.88]
(<i>Z</i>)- β -Ocimene	4.05	1203.9	0.01	4.89	1040.9	0.02
(<i>E</i>)- β -Ocimene	4.26	1219.1	0.10	5.05	1050.6	0.10
γ -Terpinene	4.09	1206.4	0.34	5.16	1057.9	0.35
<i>cis</i> -Sabinene hydrate	7.23	1429.7	0.01	5.30	1066.2	0.02
Octanol	8.53	1526.7	0.02	5.47	1077.3	0.02
Terpinolene	4.57	1241.7	0.04	5.62	1086.4	0.04
Linalool	8.40	1516.9	0.26	5.88	1102.5	0.25
Nonanal	6.18	1353.0	0.03	5.92	1104.9	0.03
<i>trans-para</i> -Mentha-2,8-dien-1-ol	9.30	1586.4	0.02	6.14	1119.2	0.02
<i>cis</i> -Limonene oxide	6.76	1394.5	0.02	6.31	1129.9	0.02
<i>trans</i> -Limonene oxide	6.93	1407.2	0.02	6.39	1134.8	0.03
Citronellal	7.33	1436.5	0.04	6.68	1153.3	0.03
Terpinen-4-ol				7.01	1174.5	0.01
α -Terpineol	10.14	1653.5	0.03	7.24	1189.0	0.03
Unknown MISC XXXI [m/z 121, 79 (98), 93 (87), 94 (73), 91 (63), 105 (45)...]	8.13	1496.2	0.01	7.33	1195.0	0.01
Decanal	7.61	1457.6	0.14	7.50	1205.9	0.14
<i>trans</i> -Carveol	11.76	1788.4	0.02	7.69	1218.8	0.02
Nerol	11.44	1760.6	0.01	7.87	1230.4	0.01
<i>cis</i> -Carveol	12.10	1818.0	0.01	7.90	1232.2	0.01
Neral	9.83*	1628.7	[0.06]	7.99	1238.9	0.05
Geraniol	11.98	1807.4	0.01	8.33	1261.3	0.01
Geranial	10.46	1679.1	0.04	8.45	1269.4	0.05
Limonen-10-ol	13.52	1943.4	0.01	8.76	1290.1	0.01
Undecanal	8.99	1562.1	0.01	9.01	1307.0	0.01

(2E,4E)-Decadienal	11.58	1772.4	0.01	9.13	1315.1	0.01
<i>para</i> -Mentha-1,8-diene-4-hydroperoxide				9.41	1335.2	0.01
Limonene <i>trans</i> -glycol	16.36	2216.2	0.01	9.51	1342.0	0.01
Unknown PIMA XXVI [m/z 43, 81 (96), 95 (85), 67 (74), 69 (68), 41 (66)...204 (1)]				9.70	1355.1	tr
Neryl acetate	10.51	1683.5	0.01	9.84	1365.5	0.01
α -Copaene	7.42	1443.5	0.03	9.93	1371.8	0.03
Geranyl acetate	10.91	1717.1	0.02	10.14	1386.7	0.02
β -Elemene	8.71*	1541.0	[0.02]	10.18	1389.2	0.01
Dodecanal	10.36*	1671.6	[0.04]	10.45	1408.7	0.04
β -Caryophyllene	8.71*	1541.0	[0.02]	10.51	1413.0	0.02
β -Copaene	8.65	1536.2	0.02	10.66	1423.7	0.02
α -Humulene	9.59	1609.7	0.01	10.97	1447.1	0.01
(E)- β -Farnesene	9.83*	1628.7	[0.06]	11.11	1457.8	0.02
Germacrene D	10.09	1649.6	0.03	11.35	1475.2	0.03
Valencene	10.21	1659.2	0.02	11.51	1487.3	0.03
α -Muurolene	10.36*	1671.6	[0.04]	11.66	1498.4	0.01
γ -Cadinene	10.70	1698.9	0.01	11.79*	1508.5	[0.04]
(3E,6E)- α -Farnesene	10.80	1707.6	0.04	11.79*	1508.5	[0.04]
δ -Cadinene	10.73	1701.6	0.03	11.93	1519.4	0.03
α -Elemol	14.39	2024.5	0.02	12.27	1546.1	0.01
β -Sinensal	15.79	2159.1	0.02	14.10	1693.9	0.03
α -Sinensal	16.76	2256.3	0.07	14.75	1749.7	0.06
Palmitic acid				17.18	1970.7	0.08
Linoleic acid				18.87	2138.0	0.05
Oleic acid				18.93	2144.6	0.04
Stearic acid				19.17	2169.3	0.22
Tangeretin				27.23	3141.0	0.04
3,3',4',5,6,7,8-Heptamethoxyflavone				29.37	3322.2	0.02
Nobiletin				29.44	3327.2	0.01
Total reported		98.81%			99.44%	

*: Two or more compounds are coeluting on this column

[xx]: Duplicate percentage due to coelutions, only the first one is taken into account in the consolidated total

†: Peaks apexes were resolved, but peaks overlapped and were summed for analysis

tr: The compound has been detected below 0.005% of total signal.

Note: no correction factor was applied

R.T.: Retention time (minutes)

R.I.: Retention index